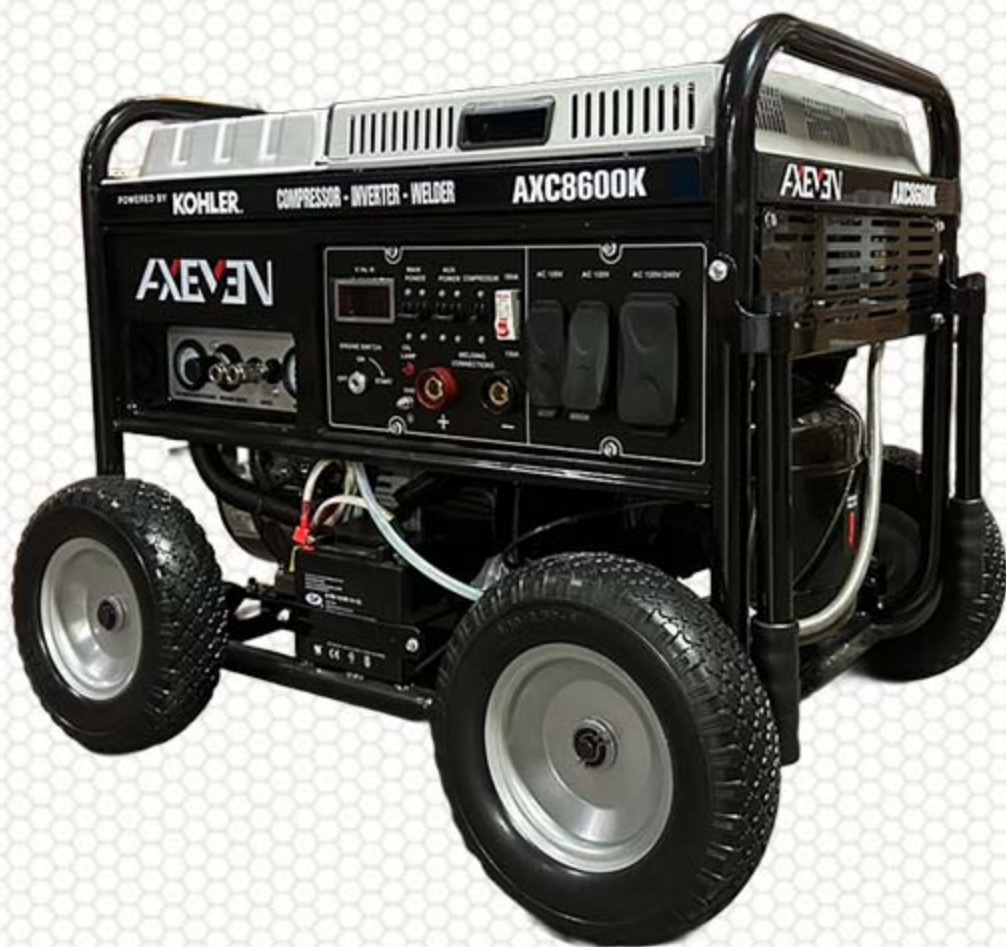


AXEMEN

AXEMEN POWER EQUIPMENT

OWNER'S MANUAL

INSTRUCTIONS FOR ASSEMBLY, TESTING, OPERATION,
SERVICING AND STORAGE



3 IN 1 MULTIPOWER STATION
WELDER
GENERATOR
AIR COMPRESSOR

AXC8600K



WARNING:



READ and UNDERSTAND the Owner's Manual completely before using this Multipower Station.

Assemble, test and use only in accordance with the Owner's Manual instructions.

WEAR personal protective gear when filling, using, cleaning, and servicing the Multipower Station.

DO NOT START the Multipower Station until you have read, understood, and followed the instructions in this manual.

Improper use of the Multipower Station could result in serious injury or illness to the operator or nearby persons/animals, and cause property damage.

Welcome

Thank you for your purchase of this quality AXEMEN POWER product. We wish you years of success using your new Multipower Station.

This manual contains general warnings about the inherent risks of operating Multipower Station s and specific warnings about the operation and maintenance of this Multipower Station. In addition, it outlines important maintenance and storage procedures.

Please read it carefully before operating, maintaining, repairing, and storing your new Multipower Station. Keep this owner's manual handy so you can refer to it at any time. This owner's manual is considered a permanent part of the Multipower Station and should remain with the Multipower Station if resold.

The information and specifications included in this publication were in effect at the time of approval for printing. AXEMEN POWER reserves the right, however, to discontinue or change specifications or design at any time without notice and without incurring any obligation whatsoever. No part of this publication may be reproduced without written permission.

Thank you for your business.

Customer service

Consult an Authorized Service Dealer regarding maintenance or repair procedures.

Please contact us with service-related questions regarding operating and assembling your new Multipower Station, including parts you may be missing.

Customer support: 1-888-929-3468

Support@axemenpower.com

www.Axemenpower.com

Retain for your records

Record your Multipower Station's model number and serial number as well as the date you purchased the Multipower Station below.

Retain this information for your records. You'll need to refer to this information when ordering parts and contacting customer service about maintaining your Multipower Station and its warranty.

Model number:

Serial number:

Date purchased:

_____Month _____Day _____Year

Contents

Welcome 1

Customer service 1

Retain for your records 2

Important safety precautions 5

Safety 6

Carbon Monoxide WARNINGS 8

Burn and fire WARNINGS 9

About your Multipower Station 9

Reference manual contains critical information 9

What’s in the Box? 10

Engine Controls 11

Initial Set-Up 11

Pre-operation check 14

Are you ready to get started? 14

Is your Multipower Station read to go? 15

Fuel and Oil Requirements 16

Fuel Requirements 16

Oil requirements 16

Using caution when refueling the tank 17

Inspect Fuel System/Check for Leaks 17

Operation 18

Multipower Station Placement 18

Shutdown Procedures 18

Maintenance 19

Importance of maintenance 19

Maintenance safety precautions 20

Multipower Station Maintenance Schedule 21

Detailed Instructions – Maintenance & Repair 22

Inspect Safety/Relief Valve 22

Inspect Air Filter 23

Inspect Compressor for Air Leaks 23

Engine Maintenance 23

Between-Use Storage 24

Draining the Tank: 25

Long Term Storage Preparation 25

Troubleshooting 25
Specifications..... 28
Control Panel 29
Wire Diagram..... 30
Contact information for Technical and Customer Assistance 31
Locate an Authorized Service Dealer 32
Customer assistance 32
Limited Warranty..... 32

Important safety precautions

This manual contains critical safety information. Please read the entire manual closely.


Because safety is paramount and using an outdoor machine carries significant responsibilities, we have outlined warnings and the general hazards of operating Multipower Station. In addition, we have summarized the recommended procedures for operating, repairing, maintaining, and storing your specific Multipower Station to keep you and others safe.

Not following instructions or using poor judgment when using and maintaining your Multipower Station can cause you or someone else to be **KILLED** or **SERIOUSLY INJURED**.

It would be impossible for us to warn you of each risk and all the hazards involved in the use of Multipower Station's. Therefore, it's essential that you use your best judgment and take precautions when using, maintaining, repairing, and storing your Multipower Station.

There are many safety warnings in this manual and on the Multipower Station itself to guide you:

Multipower Station safety labels: The safety labels on your Multipower Station warn of potential danger. It's critical that you read them. If any labels become difficult to read or have been removed, contact your dealer for a replacement label.

Manual safety messages: This manual contains specific instructions and severe warnings about the ramifications of using poor judgment and not following the instructions outlined in this manual. The ramifications range from serious injury and losing consciousness to death. These messages are preceded by a safety alert symbol  and one of three signal words, DANGER, WARNING, or CAUTION.

These signal words mean:



You WILL be KILLED or SERIOUSLY HURT if you don't follow instructions



You CAN be KILLED or SERIOUSLY HURT if you don't follow instructions



You CAN be HURT if you don't follow instructions

Manual headings and sections: We've devoted several sections of this manual to outline the risks, hazards, and warnings when using, repairing, maintaining, and storing your Multipower Station.

Instructions: how to use this Multipower Station correctly and safely.

Pay attention to cautions such as, "**Carbon monoxide WARNINGS**" or "**Burn and fire WARNINGS.**"



Read manual before operating unit

⚠ WARNING: SPECIAL HAZARDS ⚠

- **CO Poisoning:** Exhaust from engine contains carbon monoxide, a poisonous gas that can cause carbon monoxide poisoning and possible death if inhaled.
- **Injection Injury:** High pressure air stream can pierce skin and underlying tissue, leading to serious injury and possible amputation. Such an injection injury can result in blood poisoning and/or severe tissue damage.
- **Flying Debris:** High-pressure air stream can cause flying debris and possible surface damage.
- **Electric Shock:** Operating equipment in wet conditions or near water can cause electric shock.
- **Not For Breathing Air:** AXEMEN Power Inc. compressors are NOT designed, intended, or approved for supplying breathing air. No compressed air should be used for breathing unless air is treated in accordance with applicable standards.
- **Fire/Explosion:** Sparks from air powered tool heads or attachments can ignite fuel or other flammable liquids or vapors in the vicinity. Exceeding the maximum pressure for air tools or attachments could cause them to explode.
- **Burns:** Compressor pump, engine, and discharge tubing are hot surfaces that can cause burn injuries.

* Detailed safety information about these hazards appears throughout this manual.

Important Safety Information

AXEMEN POWER Multipower Station is designed to provide compressed air, power and welding primarily used for operating air tools and pressurizing other non-tool objects such as tires. Special precautions are necessary when used for cleaning. This compressor is NOT to be used to supply breathing air.

Note: Do not use for other purposes, as unforeseen hazards or equipment damage may result.

Most injuries or property damage can be prevented if you follow all instructions in this manual and on the Multipower Station. The most common hazards are discussed below, along with the best way to protect yourself and others.

Operators Responsibility

It is the operator's responsibility to provide the necessary safeguards to protect people and property. Know how to stop the Multipower Station quickly in case of emergency. If you leave the Multipower Station for any reason, always turn the engine off. Understand the use of all controls and connections.

Adult Control ONLY: Only trained adults should set up and operate the Multipower Station. Be sure that anyone who operates the Multipower Station receives proper instruction. Do not let children operate the Multipower Station. Keep children and pets away from the area of operation.

Personal Protection: Wear safety apparel during operation, including safety glasses with side and top protection. Ear protection is also recommended if working near any operating engine.

Under the influence: Never operate, or let anyone else operate, the Multipower Station while fatigued or under the influence of alcohol, drugs, or medication.

* Keep this manual for reference and review.

Refuel With Care

Gasoline is extremely flammable, and gasoline vapor can explode. Refuel outdoors, in a well-ventilated area, with the engine stopped and the equipment on a level surface. Do not fill the fuel tank above the fuel strainer shoulder. Never smoke near gasoline, and keep other flames and sparks away.

Remember, always store gasoline in an approved container. Make sure that any spilled fuel has been wiped up before starting the engine.



NOTICE:



ATTENTION: Rental Companies and Private Owners who loan this equipment to others!

- All person to whom you rent/loan this Multipower Station must have access to and read this manual. Always keep this owner's manual with the Multipower Station and advise all persons who will operate the machine to read and understand it. You must also provide personal instruction on how to safely set-up and operate the equipment and remain available to answer any questions a renter/borrower might have. Owner's manuals are available from AXEMEN Power Customer Support at 1-888-929-3468 or Support@Axemenpower.com

Hot Exhaust

The muffler becomes very hot during operation and remains hot for a while after stopping the engine. Be careful not to touch the muffler while it is hot. Let the engine cool down before transporting the equipment or storing it indoors.

To prevent fire hazards, keep the Multipower Station at least 7 feet (2 meter) away from building walls and other equipment during operation. Do not place flammable objects close to the engine.

Carbon Monoxide Hazard

Exhaust contains poisonous carbon monoxide, a colorless and odorless gas. Breathing carbon monoxide can cause loss of consciousness and may lead to death.

If you run the Multipower Station in an area that is confined, or even partly enclosed, the air you breathe could contain a dangerous amount of exhaust gas.

Never run the engine inside a closed garage, house, or confined area.

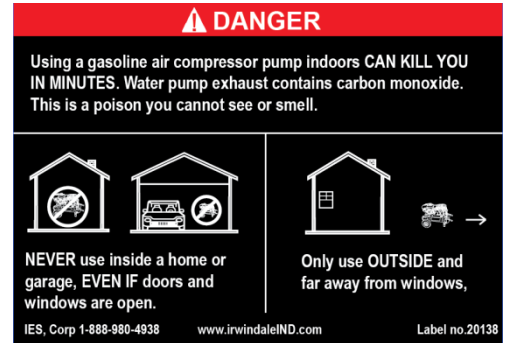
Safety warnings



Carbon Monoxide WARNINGS

Only operate your Multipower Station outdoors.

Operating an Multipower Station carries serious responsibility. There are precautions that you need to take when operating an Multipower Station:

- Never operate your Multipower Station indoors or near any windows or doors.
- Never operate your Multipower Station in an enclosed or a partially enclosed area such as a garage.
- Do not let the exhaust from your Multipower Station build up to dangerous levels.
- Do not breathe the poisonous gas in your Multipower Station exhaust.
- Become familiar with your multipower station. Understand all your Multipower Station controls, connections, and outputs. Know how to quickly stop your Multipower Station in case of an emergency.
- If anyone else operates your multipower station, be sure he/she is properly instructed.
- Do not let children play with or operate your multipower station.
- Keep your Multipower Station at least three feet away from flammable materials.



	WARNING:	
The engine exhaust from this product contains chemicals known to the State of California to cause cancer, birth defects or other reproductive harm.		

Burn and fire WARNINGS

Your Multipower Station's exhaust system becomes hot enough that it could ignite some materials and cause severe burns.

Gasoline is highly flammable and can be explosive, so use extreme caution when refueling and operating your Multipower

- Stop engine when refueling.
- Do not smoke when refueling your Multipower Station.
- Keep your Multipower Station at least seven feet (or 2 meters) away from buildings and equipment.
- Keep flammable materials away from your Multipower Station.
- Do not allow sparks or flames near your Multipower Station when it's refueled and keep them away from your stored gasoline.
- Fuel vapors are highly flammable, so they could ignite after your Multipower Station is started. Wipe up any spilled fuel before you restart your Multipower Station.
- Do not operate your Multipower Station in enclosed or partially enclosed areas.
- Avoid touching your Multipower Station's muffler. It becomes extremely hot when your Multipower Station is in use. It remains hot for quite a while after you turn your Multipower Station off, so wait to move your Multipower Station into storage until the muffler has completely cooled to avoid severe burns.

About your Multipower Station

Reference manual contains critical information

It's recommended that you keep this Owner's Manual near your Multipower Station, so you can refer to it while operating and maintaining it. If you resell your Multipower Station, this manual is considered to be a part of the Multipower Station and should be passed along with it to the new owner.

The information contained in this manual as well as the specifications outlined in it were in effect upon approval for publishing this manual. AXEMEN Power Inc. reserves the right to change the specifications and instructions. AXEMEN Power Inc. also reserves the right to discontinue and modify the design of the Multipower Station at any point without incurring any obligation and without providing notice. This document may not be reproduced in whole or in part without written permission from AXEMEN Power Inc.

Attention: All Rental Companies and Private Owners who loan this equipment to others!

All persons to whom you rent/loan this Multipower Station must have access to and read this manual. Always keep this owner’s manual with the Multipower Station and advise all persons who will operate the machine to read it. You must also provide personal instruction on how to safely operate the Multipower Station and be available to answer any questions a renter/borrower might have.

This Multipower Station is a machine designed for outdoor Multipower Station applications primarily used in the operation of air tools and pressurizing other non-tool objects such as tires. Special precautions are necessary when using this compressor for cleaning applications. It is not to be used to supply breathing air.

The technical specifications for your Multipower Station are provided in the “Specifications” section of this manual.

What’s in the Box?

Below is a summary of the components included in your Multipower Station set. It’s recommended that you review the items listed below and confirm they were all included in your purchase.

Name of Component	Quantity
Multipower Station	1
Owner’s Manual	1
Engine Manual	1

Engine Controls

Fuel Shut Off

The fuel shut off valve opens and closes the connection between the fuel tank and the carburetor. The fuel shut off valve lever must be in the ON position for the engine to run. When the engine is not in use, leave the fuel valve lever in the OFF position to prevent flooding and to reduce the possibility of fuel leaks.

On/Off Switch

The ignition On/Off switch controls the ignition system. The ignition switch must be in the ON position for the engine to run. Turning the ignition switch to the OFF position stops the engine.

Choke Control

The choke control lever opens and closes the choke valve in the carburetor. The CLOSED position enriches the fuel mixture for starting a cold engine. The OPEN position provides the correct fuel mixture for operation after starting, and for restarting a warm engine.

Auto Throttle Control

This Multipower Station utilizes an auto throttle solenoid to control the engine speed. The operator should not adjust the throttle or engine speed.

Starting Handle

Pulling the starting handle operates the recoil starter to crank the engine for starting.

Oil Sentry (if equipped)

This switch is designed to prevent engine from starting in low oil or no oil condition. Oil Sentry may not shut down a running engine before damage occurs. In some applications this switch may activate a warning signal.

Initial Set-Up

Multipower Station: Wheels and Feet Installation

Inspect contents:

Please inspect your unit for any missing parts or damage to the unit. Also, verify that the unit in your possession is the unit you have ordered.

See "component Identification" section of this manual for a diagram of the compressor and its full list of components.

- For **missing components**, contact AXEMEN Power Support at 1-888-929-3468.
- For **damage components**, contact the freight company that delivered the unit and file a claim.
- If **complete**, fill out the product serial number information. See Limited Warranty section of this manual.

For Outdoor Use ONLY

Select a suitable outdoor location:

- Where it will NOT be exposed to rain, snow, or direct sunlight.
- Where no flammable vapors, dust, and gases are present.
- At least 7 feet away from combustible materials.
- Away from building windows or other air intakes.
- Away from other heat generating equipment.
- Away from dusty/dirty conditions

Poisoning: The Multipower Station should be mounted on a dry, firm, and level surface. It must sit level and be stabilized so it will not slide or shift during operation.

- Situate so there is adequate pulling room for starting the engine using the recoil starter. Attempting to pull at an odd angle could rip off grip cord and/or cause muscular injuries to the operator.

Airflow:

- The location should allow for adequate, unobstructed airflow for cooling and combustion air.
- Do not allow debris to accumulate or block airflow.
- Do not operate with a tarp, blanket, or cover surrounding the machine.
- Do not place any objects against or on top of the unit.

Exhaust:

WARNING: Exhaust Modification Hazard

Never attempt to attach ductwork to the muffler system to allow for installation inside an enclosure. This could cause heat build-up and increased exhaust back-pressure, resulting in possible exhaust leakage or damage to the compressor.

DANGER: Carbon Monoxide Hazard

Exhaust fumes from the engine contain carbon monoxide (CO), a poisonous gas you cannot see, smell, or taste. The CO generated by the engine can rapidly accumulate, even in areas that appear to be well ventilated, resulting in dangerous and fatal concentrations within minutes. NEVER run air inside any enclosed or semi-enclosed spaces, including homes, garages, basements, sheds, boxes, pick-up truck beds, RV's, or boats. These spaces can trap poisonous gases, EVEN if you run a fan or open windows. If you start to feel sick, dizzy, or weak while using the Multipower Station, shut off the engine and get to fresh air RIGHT AWAY. See a doctor. You may have carbon monoxide poisoning.

- Place the unit so that the exhaust fumes will not be directed towards people or building air intakes.
- Keep a fire extinguisher rated “ABC” nearby which is properly charged. Be familiar with its use.
- Provide battery-operated or battery back-up type carbon monoxide alarms in a structure that is in close proximity to the running compressor.
- Do not install in small, enclosed areas without an ample circulation of supply air.

Ideal operating temperatures:

- 40° to 100° F (4° to 37° C)

Operating Limitations:

- 15° F (-9° C) or above 125° F (52° C)

If temperatures consistently drop below 32° F (0° C), store inside a heated building. If this is not possible, protect the safety/relief and drain valves from freezing.

Note: In frequently humid areas, moisture may form in the pump and produce sludge in the oil, causing parts to wear out prematurely. Excessive moisture is likely to occur if unit is stored in an unheated area subject to large temperature changes.

Two signs of excessive humidity are external condensation on the pump when it cools down and a “milky” appearance in pump oil.


Install Spark Arrestor (if Required)

Equip engine with spark arrestor if machine will be used near any ignitable forest, brush, or grassy land. (See engine Owner’s Manual provided to determine if the engine is already equipped.) Make sure you comply with applicable local, state, and federal codes.

Installing Air Discharge Hose/Piping

If installing discharge piping you must:

- Adhere to all local building codes.
- Use discharge piping of the same diameter as the compressor discharge connection.
- Use pipe, tube, hose, or distribution components rated for use with compressed air and maximum pressure of this compressor.
- Use a properly rated flexible connection between the tank and discharge piping.

 WARNING: Burst Hazard 
<p>Do not use plastic (PVC) pipe, rubber hose, copper, or lead-tin solder joints anywhere in the compressed air system.</p>

Pre-operation check

Are you ready to get started?



Your safety is your responsibility. A little time spent in preparation will significantly reduce your risk of injury.

Knowledge

Read and understand this manual. Know what the controls do and how to operate them.

Familiarize yourself with the Multipower Station and its operation before you begin using it. Know what to do in case of emergencies.

Before starting the compressor, review the safety rules found below and throughout the manual.

 WARNING: 
<p>READ and UNDERSTAND <u>this owner's manual</u> completely before using the Multipower Station.</p> <p><i>Improper use of the Multipower Station could result in serious injury or illness for the operator or nearby persons/animals, or cause damage to the environment. Failure to follow safety rules may result in serious injury or death to the operator or bystanders.</i></p>

Instruct Operators

Owner must instruct all operators in safe set-up and operation. Do not allow anyone to operate the compressor who has not read the Owner's Manual and been instructed on its safe use.

Safety Equipment/Controls

Always operate with all safety covers, guards, and barriers in place and in good working order, and all controls properly adjusted for safe operation.

Moving Parts

Keep hand, feet, hair and apparel away from moving parts. Air vents may cover moving parts and should be avoided as well. Never remove any guards while the unit is operating.

Ear Protection

Hearing can be damaged from prolonged, close-range exposure to the type of noise produced by this compressor. The use of ear plugs or other hearing protection device is recommended for persons working within 15-20 feet of the running compressor for an extended period of time.

Eye Protection



Wear ANSI/OSHA required "Z87.1" safety glasses when operating or servicing the compressor. Pressurized air spray from this unit can cause severe injury to the eyes. Small objects can become airborne as the air spray contacts them.

Respirator

Always wear a respirator when spraying and spray in a well-ventilated area to prevent health and fire hazards.

Is your Multipower Station read to go?

For your safety, and to maximize the service life of your equipment, it is very important to take a few moments before you operate the Multipower Station to check its condition. Be sure to take care of any problem you find, or have your servicing dealer correct it, before you operate the Multipower Station. Make sure that any regular maintenance has been performed as described in “Maintenance and Repair” section.



 WARNING: 
Improperly maintaining this Multipower Station, or failure to correct a problem before operation, could cause a malfunction in which you could be seriously injured.
Always perform a pre-operation inspection before each operation, and correct any problem.

To prevent a possible fire, keep the Multipower Station at least 7 feet (2 meter) away from building walls and other equipment during operation. Do not place flammable objections close to the engine.

Before beginning your pre-operation checks, be sure the Multipower Station is on a level surface and the ignition switch is in the OFF position.

Check the General Condition of the Multipower Station

- Look around and underneath the Multipower Station for signs of oil or gasoline leaks.
- Remove any excessive dirt or debris, especially around the engine, muffler, and recoil starter.
- Look for signs of damage.
- Check that all nuts, bolts, screws, hose connectors, and clamps are tightened.
- Refer to the engine Owner’s Manual for engine maintenance instructions.
- Check oil level in the engine. See engine owner’s manual.
- Drain receiver tank of any moisture.
- Check for any unusual noise/vibration.
- Ensure the area around the compressor is free from rags, tools, debris, and flammable or explosive materials.
- Ensure belt guards and covers are securely in place.

 WARNING: Entanglement Hazard 
Do NOT operate with protective covers or guards removed. Doing so could expose high speed moving components which could allow for the operator or bystander to become entangled. Entanglement in this equipment may result in serious injury, amputation, or death.

Check the Engine

- Check the oil level (see engine manual). To avoid the inconvenience of an unexpected shutdown by the Oil Sentry system, always check the engine oil level before startup.
- Check the air filter (see engine manual). A dirty air filter will restrict air flow to the carburetor, reducing engine and Multipower Station performance.
- Check the fuel level (see monitoring fuel level in this manual). Starting with a full tank will help to eliminate or reduce operating interruptions for refueling.

Fuel and Oil Requirements

Fuel Requirements



Use only unleaded gasoline to help minimize combustion chamber deposits.

Use only clean gasoline and oil. Never use gasoline or oil that is stale, contaminated, or poor quality. This could damage your Multipower Station's engine. Keep your fuel tank and oil cup clear of impurities (e.g., dirt, dust, water).

Refer to the engine owner's manual for fuel specifications.

Any performance problems or damage to your Multipower Station's engine as a result of using fuels other than those recommended in the engine owner's manual are not covered under warranty.

Refer to the engine owner's manual for specific instructions on filling and/or refilling the fuel tank.

 WARNING: 	
Gasoline is highly flammable and explosive. You can be burned or seriously injured when handling fuel.	
<ul style="list-style-type: none">• Stop the engine and keep heat, sparks and flame away.• Handle fuel only outdoors.• Wipe up spills immediately.	

Oil requirements

Refer to the engine owner's manual for the type and quantity of the engine oil. Please check the temperature ranges and use the appropriate oil.

Do not run your Multipower Station without oil. This would damage the engine and void your warranty.

IMPORTANT NOTE!
Engine is shipped without engine oil! Before operation, engine must be filled with the appropriate type and quantity of oil as specified by the engine manufacturer. Damage to the engine will result in running the engine without the proper type and quantity of oil. The warranty does NOT cover engine damage as a result of operation the engine without oil as specified by the manufacturer. Please refer to the engine owner's manual for the type, quantity and proper method for filling the engine with oil.



WARNING: Hot Engine Hazard



A running engine is hot enough to ignite fuel. Never add fuel or remove gas cap if engine is running or still hot. Let cool more than 2 minutes or longer until engine is cool before opening gas cap.

Using caution when refueling the tank

Fuel Outdoors: Fill fuel tank outdoors – never indoors. Fuel vapor is highly flammable and could ignite after your Multipower Station is started.

Use approved container: Never fuel the compressor directly into engine fuel tank at a gas station. Static charge can build and ignite fuel. Use an UL approved fuel container with a capacity of 2 gallons or less to transfer gas to the engine.

Clean up any spills: After refueling, wipe up any spilled fuel before restarting your Multipower Station. Fuel vapors may ignite or explode, fuel spills must be cleaned up before starting. Fuel can damage components of your Multipower Station such as metal, rubber, paint, and plastic.

- If possible move machine away from spilled gas on the ground.
- Wipe up spilled gas and wait for 5 minutes for excess gas to evaporate before starting engine.
- Gas-soaked rags are flammable and should be disposed of properly.
- If gas is spilled on your skin or clothes, change clothes and wash hands immediately.

Store your gasoline away from sparks and flames.

Note: Damage caused by spilled fuel is not covered under warranty.

Inspect Fuel System/Check for Leaks

- Inspect fuel system for leaks BEFORE starting compressor. Look for:
- Signs of leaks or deterioration
- Chafed or spongy fuel hose
- Loose connections
- Loose or missing fuel hose clamps
- Damaged gasoline tank
- Selective gasoline shut-off valve

Do NOT start your equipment until all needed repairs have been completed.

Operation

Multipower Station Placement

For Outdoor Use ONLY



DANGER: Carbon Monoxide Hazard



Exhaust fumes from the engine contain carbon monoxide (CO), a poisonous gas you cannot see, smell, or taste. The CO generated by the engine can rapidly accumulate, even in areas that appear to be well ventilated, resulting in dangerous and fatal concentrations within minutes. NEVER run air inside any enclosed or semi-enclosed spaces, including homes, garages, basements, sheds, boxes, pick-up truck beds, RV's, or boats. These spaces can trap poisonous gases, EVEN if you run a fan or open windows. If you start to feel sick, dizzy, or weak while using the Multipower Station, shut off the engine and get to fresh air RIGHT AWAY. See a doctor. You may have carbon monoxide poisoning.

Select a suitable outdoor location:

- Where it will NOT be exposed to rain, snow, or direct sunlight.
- Where no flammable vapors, dust, and gases are present.
- At least 7 feet away from combustible materials.
- Away from building windows or other air intakes.
- Away from other heat generating equipment.
- Away from dust condition.

Moisture in Compressed Air: Moisture in compressed air will form into droplets as it leaves Multipower Station. When humidity is high or when a compressor is in continuous use for an extended period of time, this moisture will collect in the tank. When using a paint sprayer or sandblast gun, this water will be carried from the tank through the hose, and out of the gun as droplets mixed with the spray material. If this is not acceptable for your application, an external air dryer must be added to the system.

Shutdown Procedures

Normal Shutdown

- 1) Move the pressure switch lever to OFF and turn regulator knob counter-clockwise to the stop/shut off air-flow.
- 2) Turn engine switch to OFF position.
- 3) Turn fuel valve lever to OFF position.
- 4) Drain air from the tank by releasing pressure. Disconnect hoses and open drain valves or pull the ring on the safety relief valve.

Note: Lifting the unloader knob will not release pressure from the tank.

- 5) Once the air tank pressure gauge registers under 10 PSI, open drain valves on the bottom of the tanks to drain any moisture.
- 6) Remove spark plug to prevent accidental starting of engine.
- 7) Cool engine at least 5 minutes before storing. A hot engine is a fire hazard. (See "Storage" section for more information.)

Malfunction During Operation.

Immediately turn off the compressor if any of the following conditions arise during operation:

- Excessive change in motor speed, slow or fast
- Overheating
- Excessive vibration
- Unusual noise
- Flame or smoke
- Air leakage

To stop the compressor in an emergency:

1. Move the pressure switch lever to the OFF and close the ball valve to stop/shut off air-flow.
2. Turn engine switch to OFF position.
3. Turn fuel valve lever to OFF/Closed position.
4. Pull the safety relief valve to quickly release pressure from the tank.
5. Remove spark plug to prevent accidental starting of engine.
6. Ensure compressor will not be restarted until problem is remedied.



WARNING: Shutdown Hazard



Do not leave an operating machine unattended. Always shut the machine OFF and relieve the pressure before leaving the machine. NEVER disconnect the high-pressure hose from the unit while the tank and air line is pressurized.

Maintenance

Importance of maintenance

Proper maintenance is critical for the smooth operation of your Multipower Station and safety.

Below are guidelines including a maintenance schedule and inspection procedures. There are additional procedures that are more complicated or require special tools that are best performed by certified technicians and qualified mechanics.



WARNING: Maintenance Hazard



Always shut off engine, disconnect the spark plug wire from the spark plug and release air pressure from the receiver tank before cleaning, adjusting, or servicing the compressor. Make sure all guards and shields are replaced before re-starting.

The maintenance procedures and schedule apply to “normal” operating conditions. If your Multipower Station is used more heavily or in extreme conditions (e.g. sustained high-load, high-temperature, dusty or wet environments), consult your Service Dealer for recommendations that are applicable to your specific needs and usage. Maintenance, replacement, and repair of your Multipower Station’s emission control devices and its systems can be performed by any engine repair establishment or repairperson, using parts that are certified to EPA standards.

Note: Your Authorized Service Dealer is knowledgeable about your Multipower Station and is best equipped to maintain and repair it. To ensure smooth, economical, and trouble-free operations, use only new, genuine AXEMEN Power Multipower Station parts or their equivalents when repairing your Multipower Station and replacing its parts.

Maintenance safety precautions

Critical safety precautions are summarized below. Read the maintenance instructions before you begin and confirm that you have the necessary skills and proper tools to perform the procedures.

Since we couldn’t possibly warn you of every possible hazard that could arise while maintaining your Multipower Station, it’s essential that you use good judgment when deciding which procedures should be performed and use care when performing the procedures.

Turn Multipower Station off before servicing: Confirm that your Multipower Station’s Engine Switch is turned to the OFF position and remove the spark plug cap before beginning any maintenance and repairs.

Exhaust contains carbon monoxide: Never operate your Multipower Station in an enclosed or partially enclosed area. Be sure there is adequate ventilation. The engine exhaust contains carbon monoxide, a poisonous gas that is odorless and colorless. Be sure to have adequate ventilation when operating your Multipower Station and never allow the gas to build up.

Multipower Station s get extremely hot: To avoid severe burns always allow the engine and the exhaust system to completely cool before touching, moving, and storing.

Gasoline is flammable: Use extreme care when working with gasoline to avoid the possibility of fires and explosions. Use only nonflammable solvents when cleaning parts. DO NOT use gasoline to clean your Multipower Station’s parts. Keep sparks, cigarettes, and flames away from all fuel, your Multipower Station, and any fuel-related components.

Guards and Shields: Make sure all guards and shields are replaced after servicing the Multipower Station.

Keep your Multipower Station upright: Never lay your Multipower Station on its side while moving, storing, or using it. Oil could leak and damage your Multipower Station’s engine and surrounding areas.

Comply with local and current regulations: There may be local codes, ordinances, or federal or state Occupational Safety and Health Administration (OSHA) regulations that apply to the use of your Multipower Station. There may be additional regulations that apply if your Multipower Station is used on construction sites.

(Failure to follow maintenance precautions, procedures, and guidelines can cause you to be seriously injured or killed.)

Multipower Station Maintenance Schedule

Perform at indicated intervals		Regular service period (1)					
		Before each use	Weekly	First month	Every three months	Every six months	Every year
Start engine			●				
Engine oil*	Check	● (6)					
	Change		● (6)			● (6)	
Air filter Engine* and Compressor Pump	Check		● (6)				
	Clean				● (2)		
Sediment cup	Clean					● (3)	
Inspect safety/relief valves	Clean/Check	● (5)					
Spark plug*	Clean/adjust					● (6)	
	Replace						● (6)
Idle speed*	Check/adjust					● (3)	
Spark arrestor* (optional part)	Clean					● (3)	
Fuel tank and filter*	Clean					● (3)	
Valve clearance	Check/adjust						● (3)
Combustion chamber*	Clean/adjust						● (3)
Cylinder*	Clean					● (3)	
Check for Air Leaks	Check		●				
Check Pump Oil Level	Check	●					
Change Pump Oil/Clean Drain Plug	Change/Clean			● (7)	● (7)		
Inspect & Drain Receiver Tank	Inspect and drain	●					
Check Drive Belt Tension and	Inspect and adjust		●				

Alignment							
Dust/Debris Removal	Inspect/remove	●					
Fuel line*	Serviced			●	(4)		

NOTE: PLEASE REFER TO ENGINE MANUAL FOR MAINTENANCE SCHEDULE FOR ALL ENGINE MAINTENANCE.

* Emission-related items

Information about refueling can be found in the “Fuel Requirements” section.

Important maintenance considerations:

- (1) When used for commercial or heavier use, maintenance may be required at more frequent intervals.
- (2) Service more frequently when used in dusty areas.
- (3) These items should be serviced by an Authorized Service Dealer.
- (4) This should be serviced by an Authorized Service Dealer every three years.
- (5) Drain Multipower Station receiving tanks after each use.
- (6) Refer to engine manual for service of this item, first oil change after 5 hours of use, then every 100 hours.
- (7) After first 50 hours of use, every 3 months or 500 hours of use after that.

NOTE: Failure to follow this maintenance schedule could result in non-warrantable failures.

Detailed Instructions – Maintenance & Repair



NOTICE:
<p>Dispose of used motor and pump oil in a manner that is compatible with the environment and in accordance with local, state, and federal laws and regulations.</p> <ul style="list-style-type: none"> Take used oil in a sealed container to your local recycling center or service station for reclamation. Do NOT throw it in the trash, pour it on the ground, or pour it down the drain.

No Modifications. Never modify or alter the compressor in any way. Modifications can create serious safety hazards and will also void the warranty.

Inspect Safety/Relief Valve

This valve should be inspected on a Daily basis if used regularly or the first time it is being used after a prolonged period of storage. The safety valve automatically releases air if the tank pressure exceeds the preset maximum.

- Check the safety/relief valve by pulling the rings.
- Replace safety/relief valve that do not operate freely.

 WARNING: Safety/Relief Valve Hazards 
<p>If the safety/relief valve does not work properly, over-pressurization may occur causing air tank rupture or explosion. Occasionally pull the ring on the safety valve to make sure the safety valve operates freely. If the valve is stuck or does not operate smoothly, it must be replaced with a valve having the same pressure rating. Please contact AXEMEN Power, Inc support for replacement parts.</p>

Inspect Air Filter

Inspect the compressor’s air filter elements on a Weekly basis if used regularly or the first time it is being used after a prolonged period of no use. A dirty air filter will not allow the Multipower Station to operate at full capacity.

- Clean air filters when necessary
- Every 12 months or 1000 hours, replace the air filter.

Note: Keep the air filter clean. Do not operate with the air filter removed. Operating the compressor without an air filter or dirty air filters will void the warranty.

Inspect Compressor for Air Leaks



Inspect system for air leaks on a Weekly basis, or again, at the first use after a prolonged period of storage.

- Squirt soapy water around joints during compressor operation and watch for bubbles. Developing bubbles indicate a leak is present.
- Tighten fittings if necessary.

Engine Maintenance

Perform engine maintenance as specified in the engine owner’s manual. Items include:

- Change oil after the first 5 operating hours, and at least every 100 hours of use after that. Please refer to the engine owner’s manual for details.

 WARNING: Burn Hazard 
<p>Never open oil port while compressor is running. Hot oil can spray over face and body.</p>

- Air filters check/replacement.
- Spark plug cleaning/replacement.
- Fuel filter check/replacement.
- Fuel tank cleaning.

Storing and transporting your Multipower Station

Always keep your Multipower Station upright.

Never lay your Multipower Station on its side while moving, storing, or using it.

Oil could leak and damage your Multipower Station 's engine and surrounding areas.

Between-Use Storage

Allow to cool: Your Multipower Station can get very hot when in use. A hot engine and exhaust system could cause severe burns and even ignite some materials. So, allow it to cool for at least fifteen minutes before moving or storing it.

Keep upright: To avoid damaging your Multipower Station and spilling fuel, the Multipower Station should always remain in an upright position.

Turn OFF: Confirm that the Engine Switch is in the OFF position and turn the fuel shut off lever to the off/closed position and make sure that the Fuel Tank Cap is closed.

Drain the receiver tank: To prevent tank corrosion, drain the receiver tank after each days use. Draining the tank will:

- Dry out any moisture that has accumulated in the tank. Leftover moisture can cause tank corrosion and premature failure.
- Ensure that the unit is operating properly should it be needed in an emergency.

Remove Spark Plug Wire: When machine is not in use, remove spark plug wire to prevent unintentional starting or operation by untrained persons.

Protect your Multipower Station: Never drop your Multipower Station and protect it from getting damaged when using, transporting, or storing it. Never lay heavy objects on your Multipower Station.

Carefully select storage area: While in storage, your Multipower Station needs to be free of dust and not exposed to high-humidity conditions. Select a clean and dry area that is away from sources of heat, open flames, sparks, or pilot lights, even if gas tank is empty. Residual gasoline could ignite. Select area that is away from extreme high and low temperatures. So, examine the storage area closely to be sure it's an appropriate storage area.

Draining the Tank:

- 1) Reduce tank pressure below 10 PSI by disconnecting the hoses and opening the ball valve, or pulling the ring on the safety relief valve.

Note: Lifting the unloader knob will NOT release pressure from the tank.

- 2) Drain moisture from the tank by opening the drain valve located at the bottom of the tank.

Long Term Storage Preparation

Prepare engine for long-term storage if you will not be using the machine again for more than 30 days. Fuel can become stale when stored over 30 days. Stale fuel causes acid and gum deposits to form in the fuel system which can cause engine malfunction. Please refer to the engine owner's manual for storage procedures for the specific engine you have on your compressor. In general there are two options:

- a. Remove all gasoline from the tank and carburetor, see engine owner's manual
- b. Add fuel stabilizer to the gasoline as per the engine manufacturer owner's manual.
- c. Disconnect the spark plug wire and remove spark plug
- d. Add one teaspoon of oil through spark plug hole.
- e. Place rag over spark plug hole and pull the recoil starter handle a few times lightly to lubricate the combustion chamber.
- f. Replace spark plug, but do not reconnect the spark plug wire.
- g. Pull the recoil slowly until the highest resistance is felt.
- h. Return the recoil handle gently.
- i. Confirm all pressure is released from the receiving tank and the valves are closed.

Troubleshooting

Problem	Cause	Solution
Engine will not start	Fuel tank is empty.	Refill gasoline to proper level.
	Fuel shut-off valve is in OFF/closed position.	Move fuel shut-off valve lever to ON/Open position.
	Choke is in the OFF position.	Place the choke in the ON position unless the engine is warm.
	Engine On/Off switch is in the OFF position.	Turn the engine On/Off switch to the ON position.
	Spark Plug defective, dirty, or disconnected.	Check that spark plug wire is connected properly. Clean or replace spark plug with

		properly gapped spark plug.
	Spark plug wet with fuel (flooded engine).	Dry and reinstall spark plug. Start engine with throttle lever in FAST position.
	Bad fuel: Multipower Station stored without treating or draining gasoline, or refueled with bad gasoline.	Drain fuel and carburetor and refuel with fresh gasoline. Please contact customer service if you believe this could be the problem for instruction on a service center near you or further instructions.
	Low oil level caused by Oil Sentry to stop engine.	Add oil to proper level, see engine manual.
	Fuel filter clogged, carburetor malfunction, ignition malfunction, valves struck, etc.	Take engine to an authorized servicing dealer and/or contact customer service for instructions.
Engine lacks power	Air filter clogged	Clean or replace filter
	Throttle control is in the slow position	Move throttle control to fast position.
	Fuel filter clogged, carburetor malfunction, ignition malfunction, valves struck, etc.	Take engine to an authorized servicing dealer and/or contact customer service for instructions.
	Bad fuel; Multipower Station stored without treating or draining gasoline, or refueled with bad gasoline.	Drain fuel and carburetor and refuel with fresh gasoline. Please contact customer service if you believe this could be the problem for instruction on a service center near you or further instructions.
Air delivery drops off.	Air leak in discharge	Check tubing connections, tighten

	<p>pipng.</p> <p>Compressor components leaky, broken, loose.</p> <p>Loose flywheel or engine pulley, excessive end play in engine shaft or loose drive belts.</p> <p>Clogged or dirty inlet and/or discharge line</p> <p>Defective safety/relief valve</p> <p>Unloader leaks or does not work</p> <p>Leaking, broken, or worn inlet unloader parts at check valve.</p>	<p>joints or replace as required.</p> <p>Inspect components. Clean or replace as required.</p> <p>Check flywheel, engine pulley, crankshaft drive belt tension/alignment. Replace or repair as required.</p> <p>Clean or replace.</p> <p>Replace.</p> <p>Realign stem or replace.</p> <p>Inspect parts and replace as required.</p>
<p>Compressor does not come up to speed or is slow to come up to speed.</p>	<p>Compressor pump oil viscosity is too high for ambient temperature</p>	<p>Drain existing lubricant and refill with proper lubricant.</p>
	<p>Belt tension too tight or sheaves not aligned.</p>	<p>Check tension/alignment.</p>
	<p>Loose flywheel or engine pulley, excessive end play in engine shaft or loose drive belts.</p>	<p>Check flywheel, engine pulley, crankshaft drive belt tension/alignment. Replace or repair as required.</p>
	<p>Clogged or dirty inlet and/or discharge line</p>	<p>Clean or replace.</p>
	<p>Defective safety/relief valve</p>	<p>Replace.</p>
	<p>Engine speed too slow.</p>	<p>Move throttle to FAST position.</p>

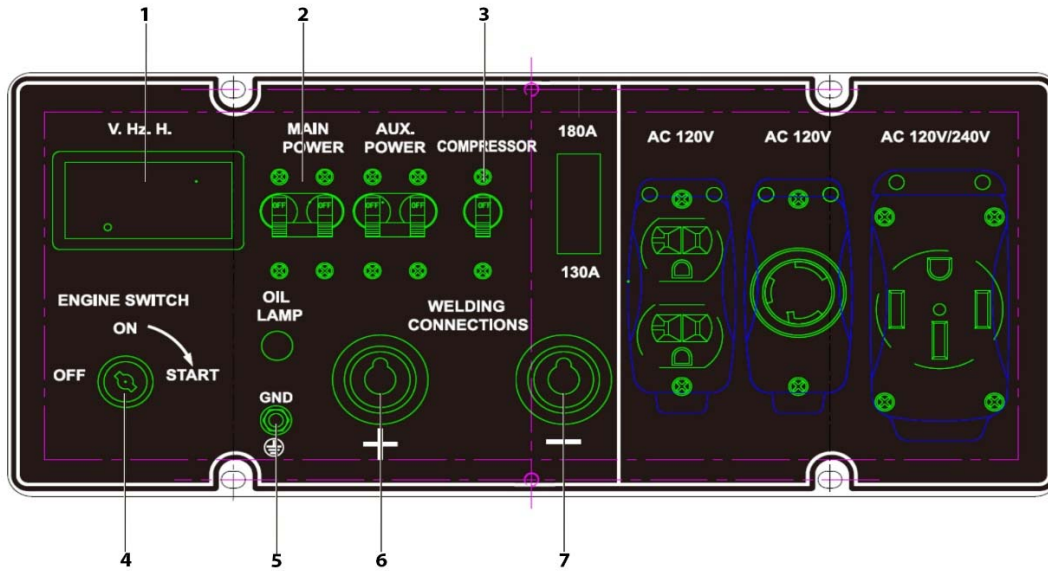
Compressor will not unload cycle or will not unload when stopped.	Air leak in discharge piping.	Check tubing connections, tighten joints or replace as required.
	Clogged or dirty inlet and/or discharge line	Clean or replace.
	Unloader leaks or does not work	Realign stem or replace.
	Leaking, broken, or worn inlet	Inspect parts and replace as required.
Excessive starting or stopping.	Unloader leaks or does not work.	Realign stem or replace.
	Excessive condensation in receiver tank.	Drain receiver tank.
	Light duty cycle.	Increase duty cycle.
Moisture in crankcase, "milky" substance in oil.	Detergent lubricant in crankcase.	Replace with proper lubricant.
Oil in discharge air	Lubricant level too high.	Drain excess lubricant.
Safety/relief valve "pops".	Clogged or dirty inlet and/or discharge line	Clean or replace.
	Defective safety/relief valve	Replace.
	Unloader leaks or does not work	Realign stem or replace.
Low interstage pressure	High pressure inlet valve leaking	Inspect, clean, or repair as required.
High interstage pressure	Low pressure inlet valve leaking	Inspect, clean, or repair as required.

Specifications

	Model	AXC8600K
Generator	Rated voltage	AC 120V / 240V
	Rated power	4500 Watt
	Max power	5000 Watt
	Phrase	Single Phrase
	Frequency	60 Hz
	Power Factor	1.0
Welder	Non-load Voltage	DV 75
	Welding Voltage	130A / 180A
	Current range	160A / 26.4V
	Rated duty cycle	50%
Air Compressor	Air Compressor Capacity	0.1m ³
	Alternator Wattage	1350W
	Pressure	115PSI
	Pressure-relief Action Range	0.6~0.8Mpa
Engine	Brand	KOHLER ENGINE
	Engine Model	Command Pro CH440
	Ignition system	CDI
	Fuel tank capacity	8 Gallon
	Oil alert system	YES
	Fuel	Gasoline
	Start mode	Electric / Recoil
Complete machine	L x W x H	850 x 580 x 650 mm
	Net weight	125 kgs / 275 lbs
	Gross Weight	140 kgs / 308 lbs
	Insulation grade	F

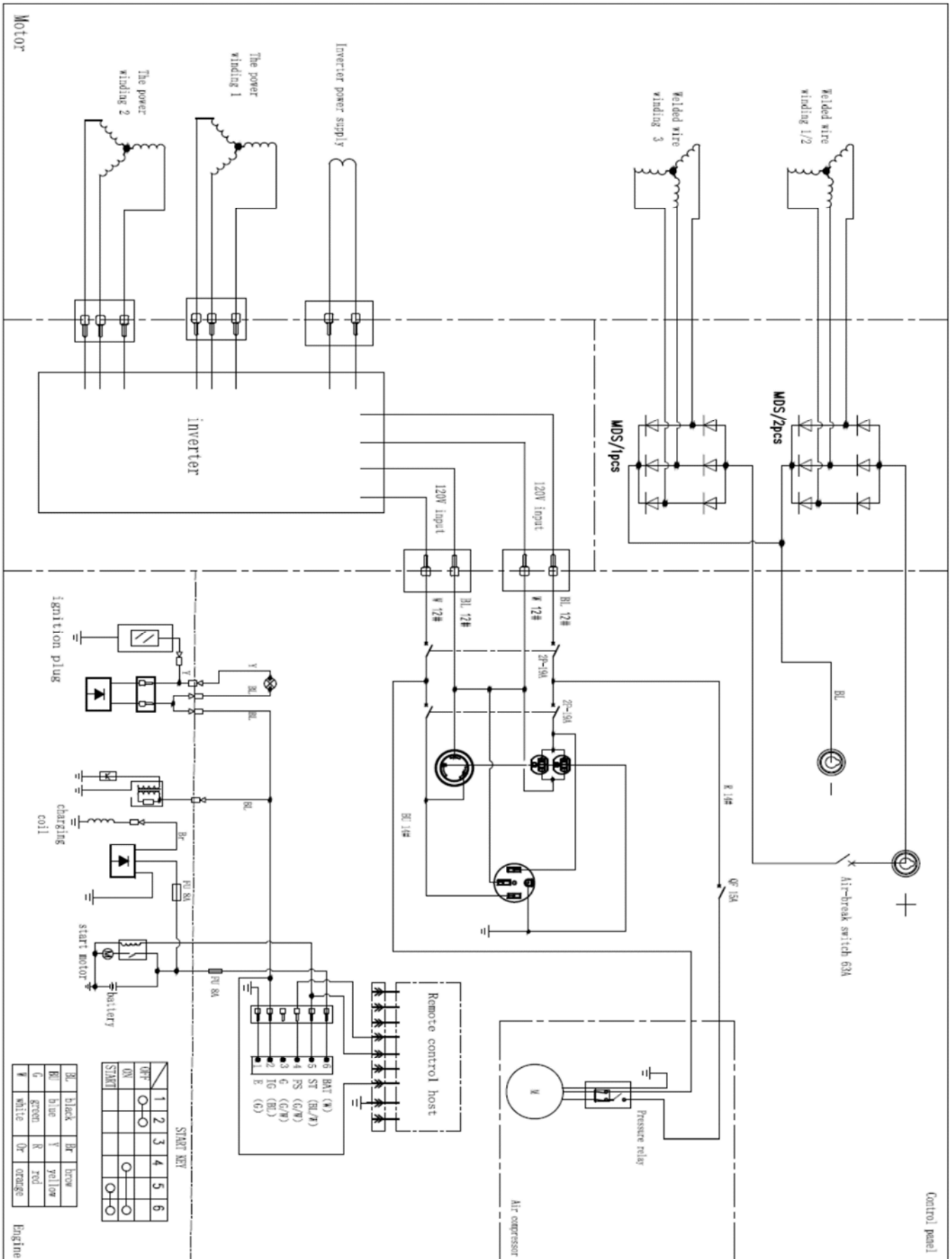
Control Panel

Note: Do not attempt to modify the control panel in any way. This will void your warranty and could present the potential for equipment failure and personal injury.



1. V.Hz.H
2. Main Power Breaker
3. Compressor Breaker
4. Engine On/Off Switch
5. GND
6. "+" Welding Connections
7. "-" Welding Connections

Wire Diagram



Contact information for Technical and Customer Assistance

Locate an Authorized Service Dealer

For assistance in finding an Authorized Service Dealer, contact AXEMEN Power, Inc Customer Service at 1-888-929-3468 or Support@Axemenpower.com. Visit our web site at www.Axemenpower.com

Registration Card

Please fill out the registration card, and return back to us within 30 days of the purchase date. Registration card can be found in the same plastic bag as your manual.

Customer assistance

Authorized Service Dealers are trained professionals who are familiar with your Multipower Station . They can answer most of your questions and help you with any problems that you may encounter. If you are not satisfied with the service you received from your representative, ask to personally speak with the Service Manager or the Dealer's General Manager. The majority of questions and issues are resolved at the local Dealership.

However, if you are not satisfied with the information or response you received from your Service Dealer, you may contact AXEMEN Power Customer Service office:

AXEMEN Power
1701 Massey Tompkins Road
Baytown, TX 77521
www.Axemenpower.com

1-888-929-3468

When you contact us, please provide the following so that we may help you most effectively:

Your Multipower Station model and serial numbers

Name of Dealer who sold the Multipower Station to you initially.

Name and address of the Service Dealer who services your Multipower Station

Date you initially purchased your Multipower Station

Your name, address, and phone number

A detailed summary of the issue

Limited Warranty

AXEMEN Power Multipower Station is manufactured and distributed by AXEMEN Power. AXEMEN Power shall warranty any piece of equipment manufactured, or parts of equipment manufactured, to be free from defects in material or workmanship for a period of 2 year from the date of purchase by user. This warranty applies to the original purchaser of the equipment and is non transferable. Verification of purchase is the responsibility of the buyer in the form of a sales receipt for the specific product. Parts will be replaced or repaired at no charge, except when the equipment has failed due to lack of proper maintenance or abuse. Any misuse, abuse, alteration or improper installation or operations will void warranty. Determining whether a part is to be replaced or repaired is the sole decision of AXEMEN Power.

NOTE: Some services performed by parties other than AXEMEN Power may void the warranty. Always contact AXEMEN Power. Customer Support at 1-888-929-3468 prior to having any service or warranty work performed, as some services performed by parties other than AXEMEN Power approved service centers may void warranty.

This warranty covers parts only. It will not provide for replacement of complete products due to defective parts. Components not manufactured by AXEMEN Power, such as engines are guaranteed by their manufacturer and can be serviced at factory-authorized locations near you. The engine warranty is covered under the terms and conditions as outlined by the engine manufacturers warranty contained herein and is the sole responsibility of the engine manufacturer. Normal engine maintenance such as spark plugs, air filters, adjustments, fuel system cleaning and obstructions due to build up is not covered by this AXEMEN Power warranty. AXEMEN Power will not provide for replacement of complete products due to defective parts.

Any costs incurred due to replacement or repair of items outside of an AXEMEN Power approved facility is the responsibility of the buyer and not covered under warranty. Transportation costs to and from service center is the responsibility of the buyer/customer. AXEMEN Power can supply you with the service center location in your area by contacting AXEMEN Power customer support at the number below.

For warranty service, find the nearest Authorized Service Dealer by calling: 888-929-3468.

This warranty specifically excludes the following: failure of parts due to damage caused by accident, fire, flood, windstorm, acts of God, applications not approved by AXEMEN Power. in writing, corrosion caused by chemicals, use of replacement parts which do not conform to manufacturer's specifications, damage related to rodent and/or insect infestation, and damage caused by vandalism. Additional exclusions: loss of running time, inconvenience, loss of income, or loss of use, including any implied warranty of merchantability of fitness for a specific use. Also, outdoor power equipment needs periodic parts and service to perform well, and this warranty does not cover instances when normal use has exhausted the life of a component or the engine.

Warranty does not cover items subject to normal wear such as tires, receptacles or any part subject to direct physical contact by the public. This warranty does not cover any personal injury or damage to surrounding property caused by failure of any part. Repair or replacement of parts does not extend the warranty period.

THIS WARRANTY IS IN LIEU OF ANY OTHER WARRANTY EXPRESSED OR IMPLIED AND AXEMEN POWER INC. ASSUMES NO OTHER RESPONSIBILITY OR LIABILITY OUTSIDE THAT EXPRESSED WITHIN THIS WARRANTY.

THERE IS NO OTHER EXPRESSED WARRANTY. ANY AND ALL IMPLIED WARRANTIES ARE EXCLUDED. LIABILITY FOR CONSEQUENTIAL DAMAGES UNDER ANY AND ALL WARRANTIES ARE EXCLUDED TO THE EXTENT EXCLUSION IS PERMITTED BY LAW.

Please fill in the following information and have it on hand when you call in a warranty claim.

Customer Number: _____

Date of Purchase: _____

Serial Number: _____

Model Number: _____



© 2024 AXEMEN Power