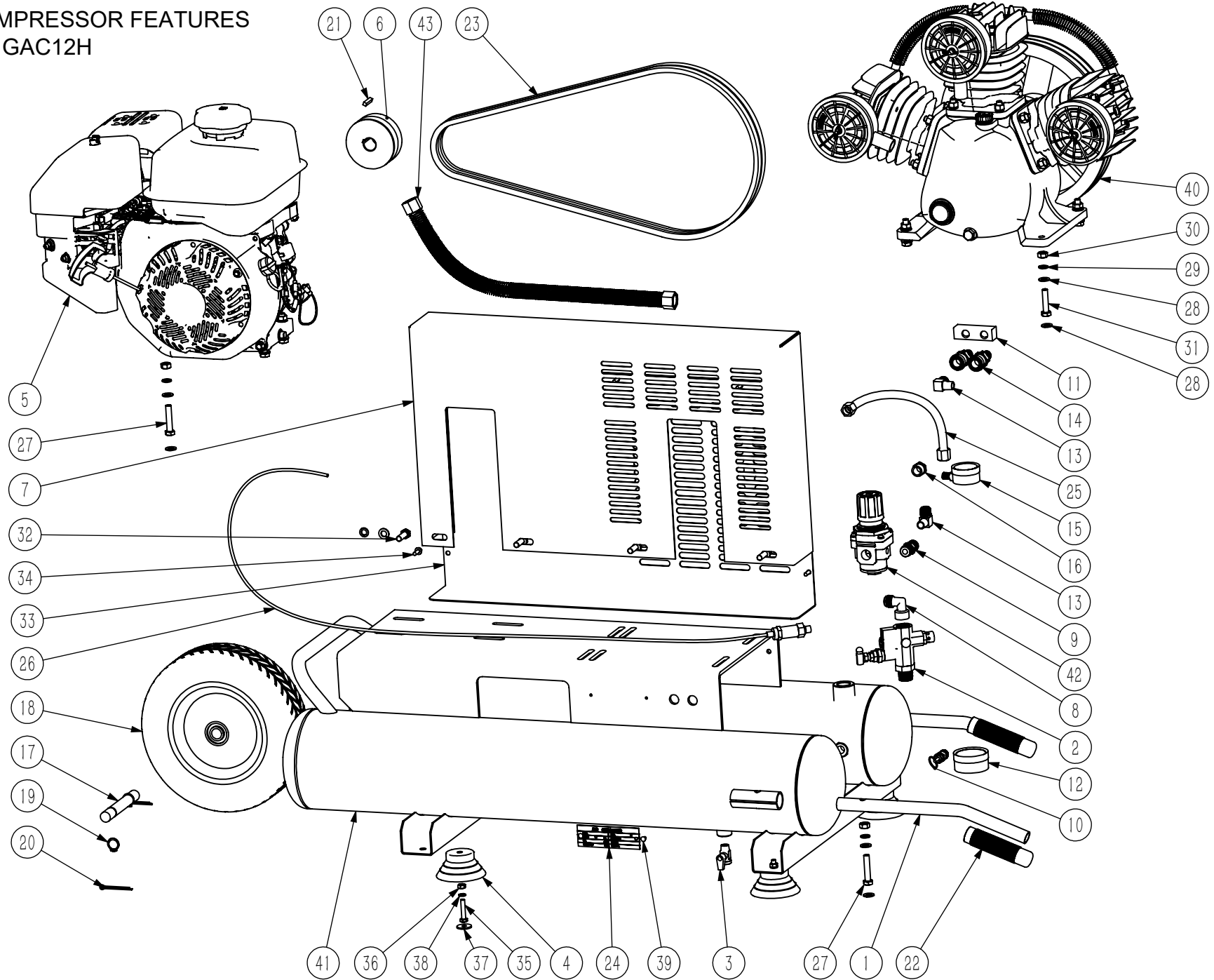


AXEVAN

GASOINE AIR COMPRESSOR FEATURES
MODEL: GAC12K, GAC12H



No.	Part Number	Description	Note	数量
1	2232-0001	Handle	HD02-TB5538A Handle	2
2	2226-0002-01	C Valve	6.8-8.8KG	1
3	2217-0002	Drain Valve	Mini Drain G 1/4	2
4	2205-0002	Rubber Mount	φ8-35mm Rubber Suction Feet L	4
5	3202-0002-2	Engine	Kohler SH270 / Honda GX200	1
6	3204-219.05076	Pulley	(SPA71-2-1108) 1108-3/4Cone Sleeve (φ19.05×φ	1
7	2221-8001-1	Belt Guard	HD02-TB5538TP Inside	1
8	1222-1234	Elbow	G1/2×(3/4-16UNF) 90° Out	1
9	1216-13388	Screw Joint	G3/8×G3/8-35MM	1
10	2216-12140	Safety Valve	G1/4 ASME 140PSi	1
11	1216-0141414	3-ways Conn	G1/4×G1/4×G1/4	1
12	2213-22211	Gauge	Y50、0-230psi、G1/4	1
13	1222-1144-3	Elbow	G1/4-M14*1.5	2
14	1216-2003	Quick Connect	G 1/4" ASME	2
15	2213-21221	Gauge	Y40、0-230psi、G1/8	1
16	2225-1348	Connector	R3/8×R1/4	1
17	2219-1669120	Axle	φ16-69-120	1
18	2201-1016-1	Foam Wheel	10" x 3"-φ16 Foam	1
19	2220-16010	Circlip	φ16×1	2
20	2206-0002	Spilt Clip	4X40	2
21	1228-0015	Key Pin	4.76×4.76×30	1
22	2229-0020-1	Rubber Grip	φ20 Black	2
23	2210-11219	Belt	A1219	2
24	8214-1002	Product ID Tag		1
25	1223-2003-1	Corrugate Pipe	M14×1.5- M14×1.5 x 28.5cm	1
26	2226-0002-02	Throttle Cable	1.1m	1
27	4201-0840	Hex Screw	M8X40	6
28	4207-0080	Washer	φ8×φ16×1.5	24
29	4208-0080	Spring Washer	φ8	14
30	4209-0080	Nuts	M8	10
31	4201-0835	Hex Screw	M8X35	4
32	4201-0825	Hex Screw	M8X25	4
33	2221-8001-2	Belt Guard (O)	HD02-TB5538TP Outside Cover	1
34	4205-4820	ST Hex Screw	4.8*20	9
35	4201-0630	Hex Screw	M6X30	4
36	4209-0060	Nut	M6	4
37	4207-0060-2	Washer	φ6×φ18×1.5	4
38	4208-0060	Spring Washer	φ6	4
39	2212-0002	Rivet	φ4×10	2
40	6201-0365-6	Pump	AW65 右排气	1
41	5201-8003	Tank	HD02-TB6538TP	1
42	2223-1001-1	Valve	AR3000-03 G 3/8-2 X G 1/8-2	1
43	1223-01245	Discharge Pipe	φ12×450mm	1